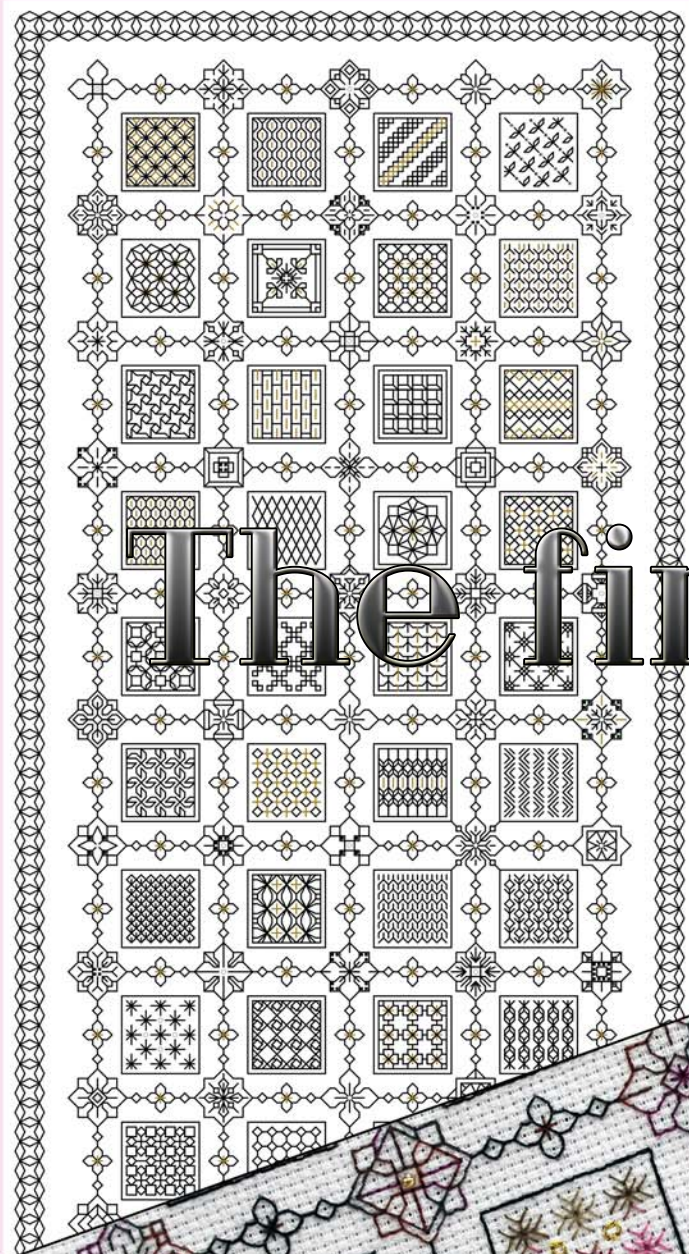
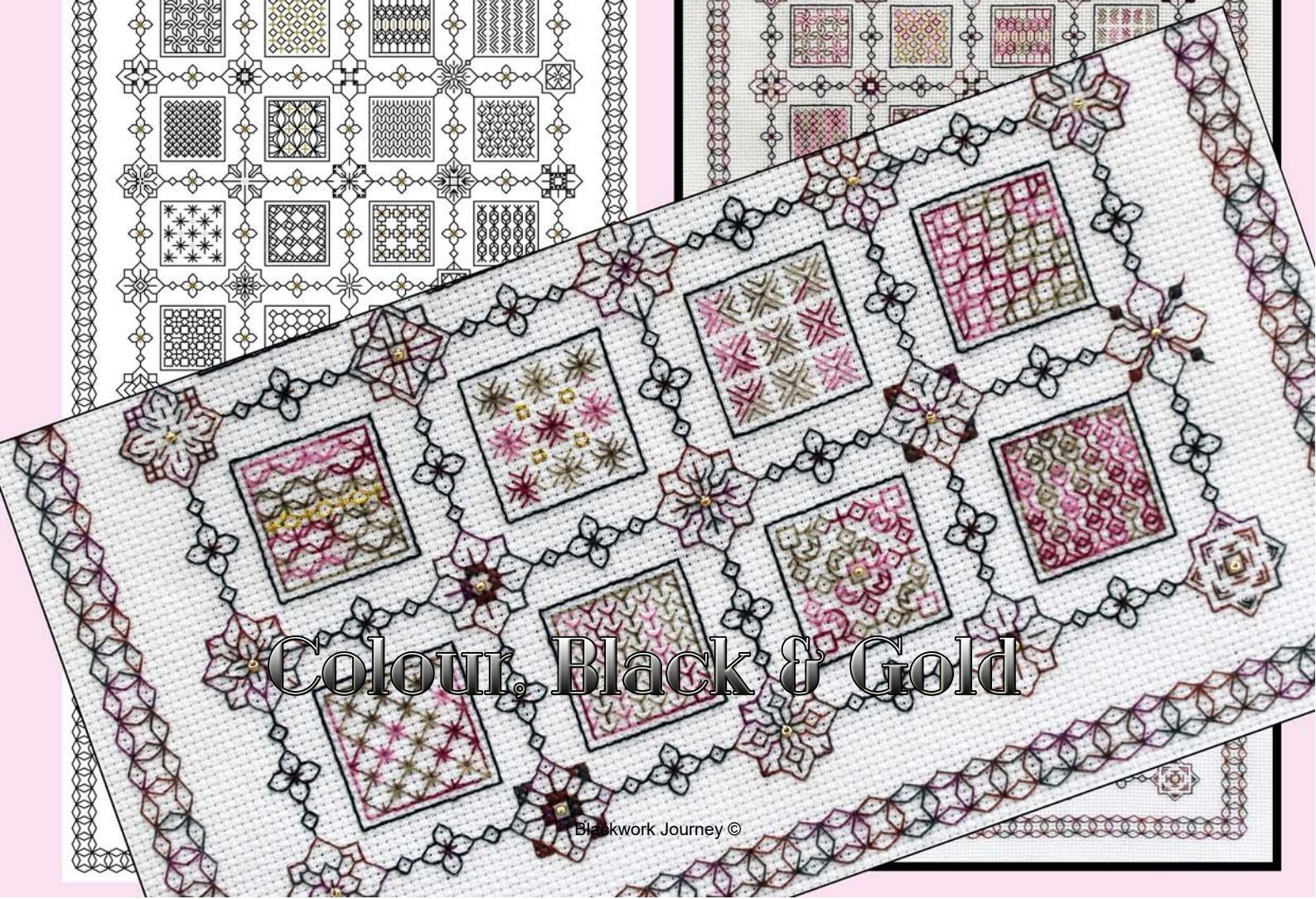


'TINY TREASURES'

Rectangle - Part 8



The final part!



Colour: Black & Gold

Tiny Treasures Rectangle Design Part 8 – Colour and Black and Gold. This is the final part of the design.

Rectangular design suitable for framing or a runner. This design is less complicated than the square design
Design area: 9.86 x 26.43 inches
Stitches: 138 x 370

Material:

Zweigart 28 count evenweave or 14 count Aida, 15 x 33 inches

25 count Lugana Material size: 17 x 35 inches

70 Flower motifs

52 Pattern blocks

1 border and 120 mini links

Total: 243 Tiny Treasures

Threads: Information about the threads required in on the Keys attached to the back of Part 1 and also in FR0159 Introduction.

Stitches used:

Back stitch, one strand of floss

Cross stitch two strands of floss

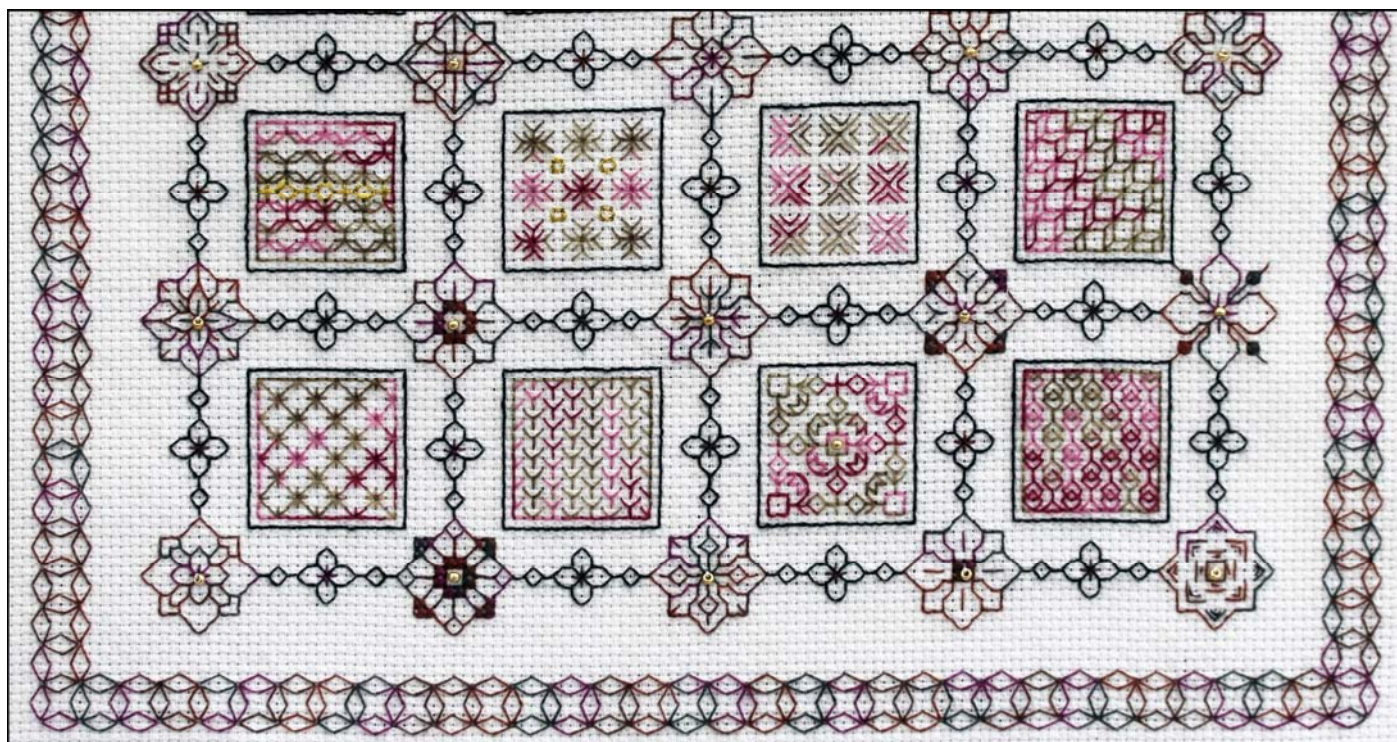
Evenweave: stitches are worked over 2 threads unless the pattern indicates otherwise.

Cross stitch: stitches are worked over one block unless the pattern indicates otherwise.

Work Rectangular Design as follows:

Complete any unfinished blocks from previous blocks. Complete the border using one strand of floss.

Add beads after the whole embroidery has been completed. Check that all the patterns have been completed



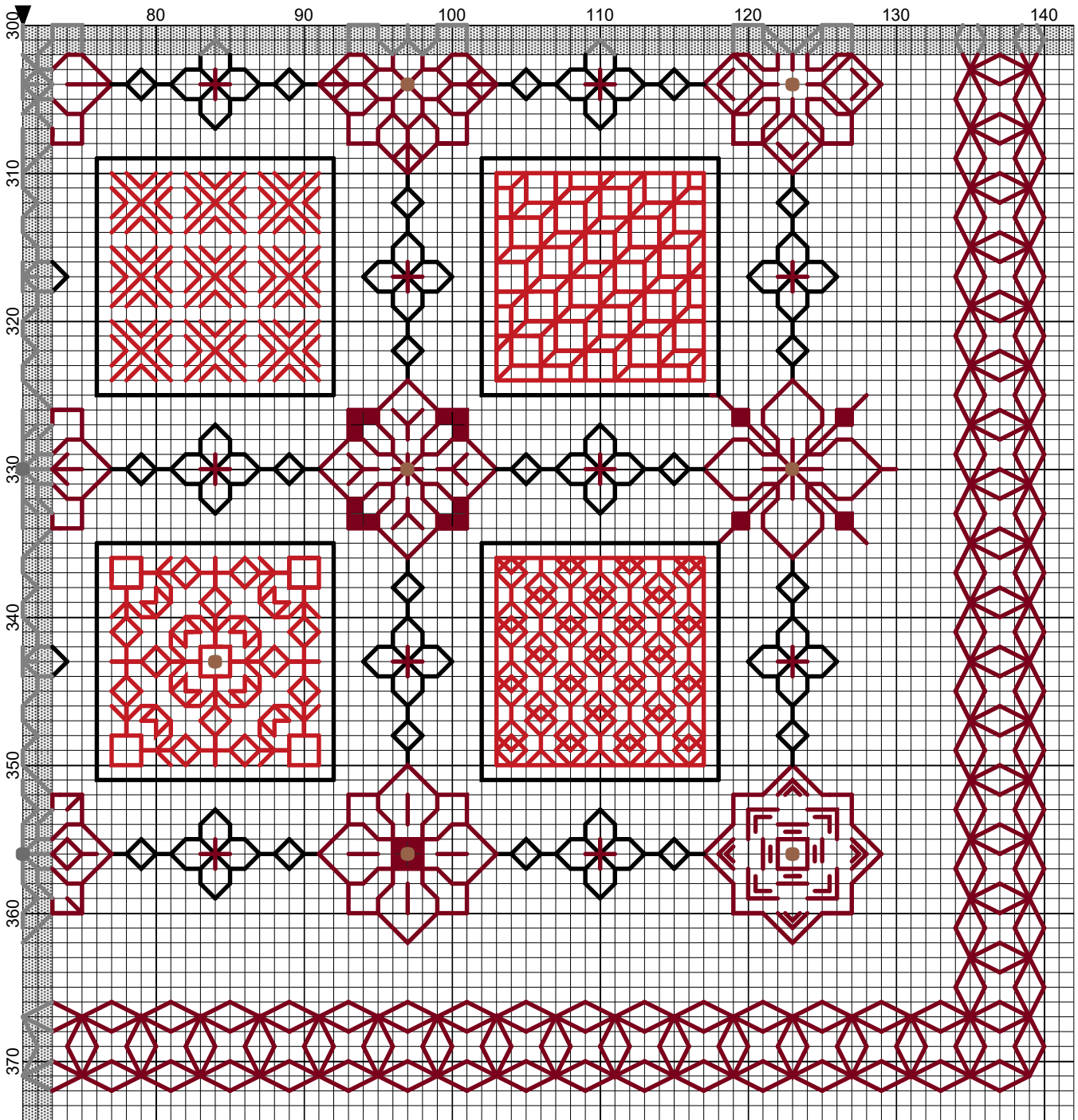
Parts 7 and 8 Rectangle worked in DMC Coloris on 14 count Aida

I hope you have enjoyed working the final part of the rectangular design.

If you have any queries please contact:

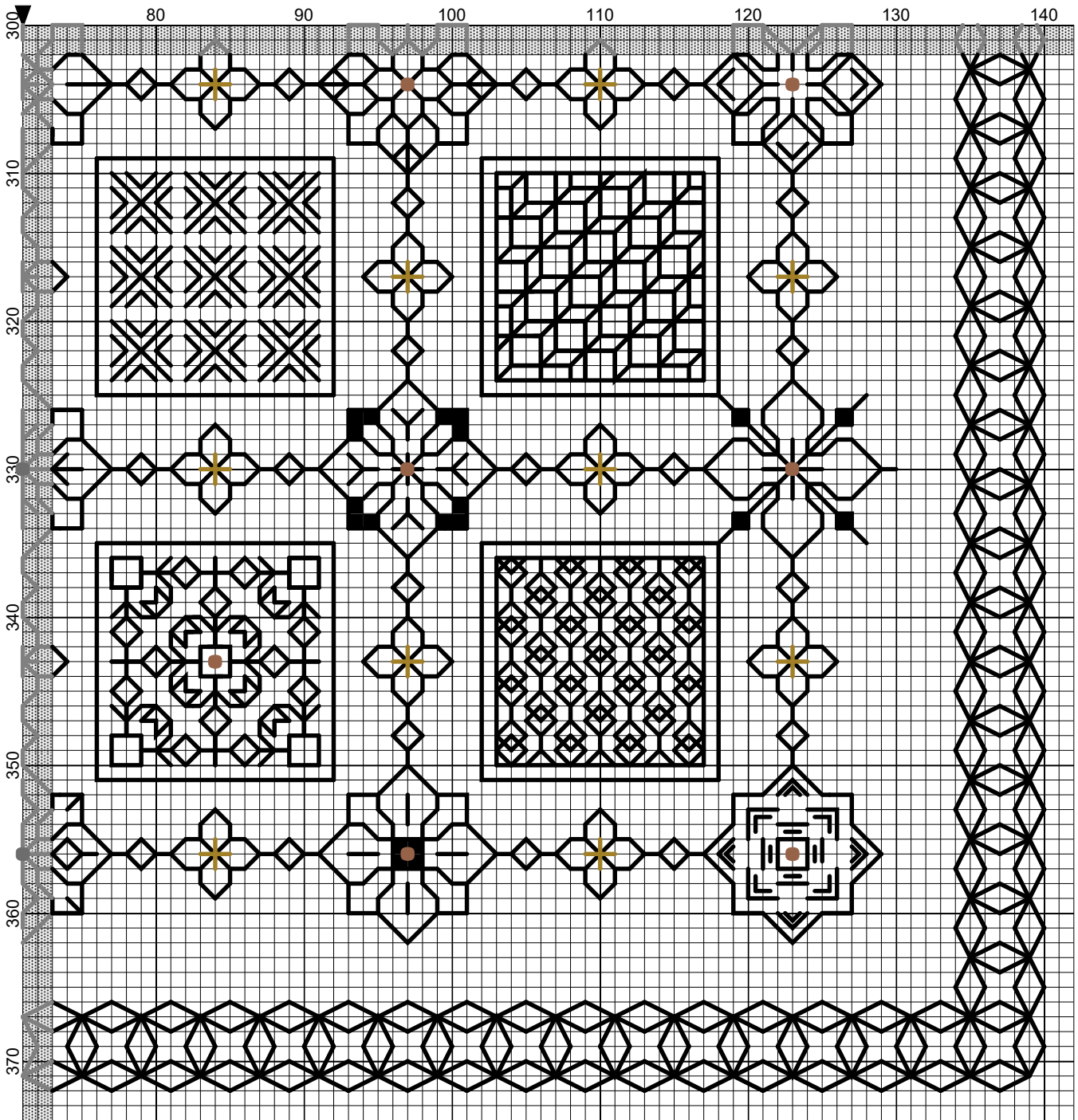
lizalmond@blackworkjourney.co.uk

Tiny Treasures Rectangular Colour Panel



Elizabeth Almond

Tiny Treasures Rectangular Black Panel



Elizabeth Almond